

This drawing contains designs and other information which are property of LMI Corp. This drawing may not, in whole or in part, be duplicated or disclosed or used for manufacture of the part disclosed herein, without the prior written permission of LMI Corp. LMI is dedicated to continuous product development and therefore reserves the right to modify the design without notice

TRACING TEMPLATE

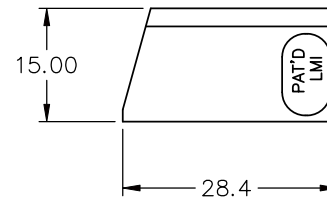
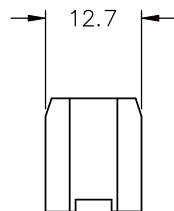
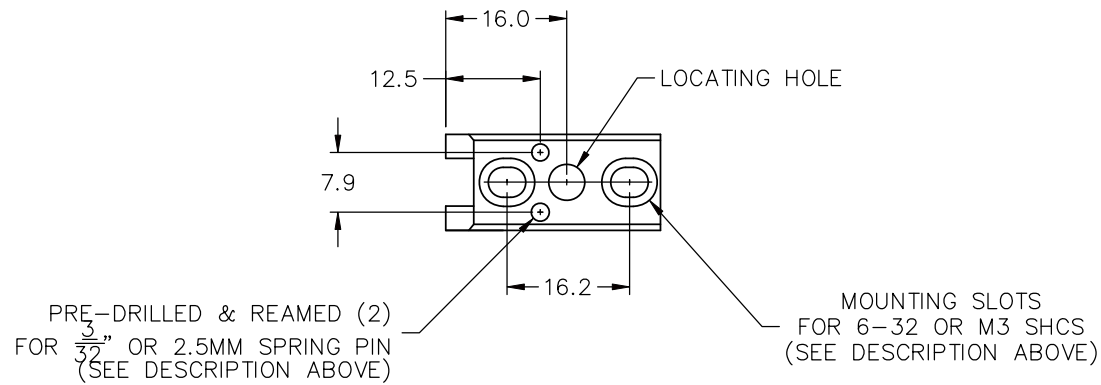
TWO MODELS OFFERED:

LMI MODEL 776 INCLUDES:

- (1) 776 RAIL MOUNT BLOCK
- (2) 3/32" DIA. X 3/4" SPRING PIN
- (2) 6-32 X 3/4" SOCKET CAP SCREW

LMI MODEL 776-M INCLUDES:

- (1) 776-M RAIL MOUNT BLOCK
- (2) 2.5MM DIA. X 20MM SPRING PIN
- (2) M3 X 20MM SOCKET CAP SCREW



MANUFACTURED UNDER ONE OR MORE OF THE FOLLOWING PATENTS:
 #4345380; #4731935; #4787151; #4831742; #4831743; #4843727; #5787017

LMI

PHONE #(810) 714-5811

TITLE: LMI 776 MOUNTING BLOCK

SHEET: 1 OF 1

REV DATE: 08/14/08