

101 N. Alloy Dr.
Fenton, MI 48430



Ph (810) 714-5811

Fax (810) 714-5711

CustomerService@lmicorporation.com

Research, Development and Manufacturing of Precision Measuring Systems

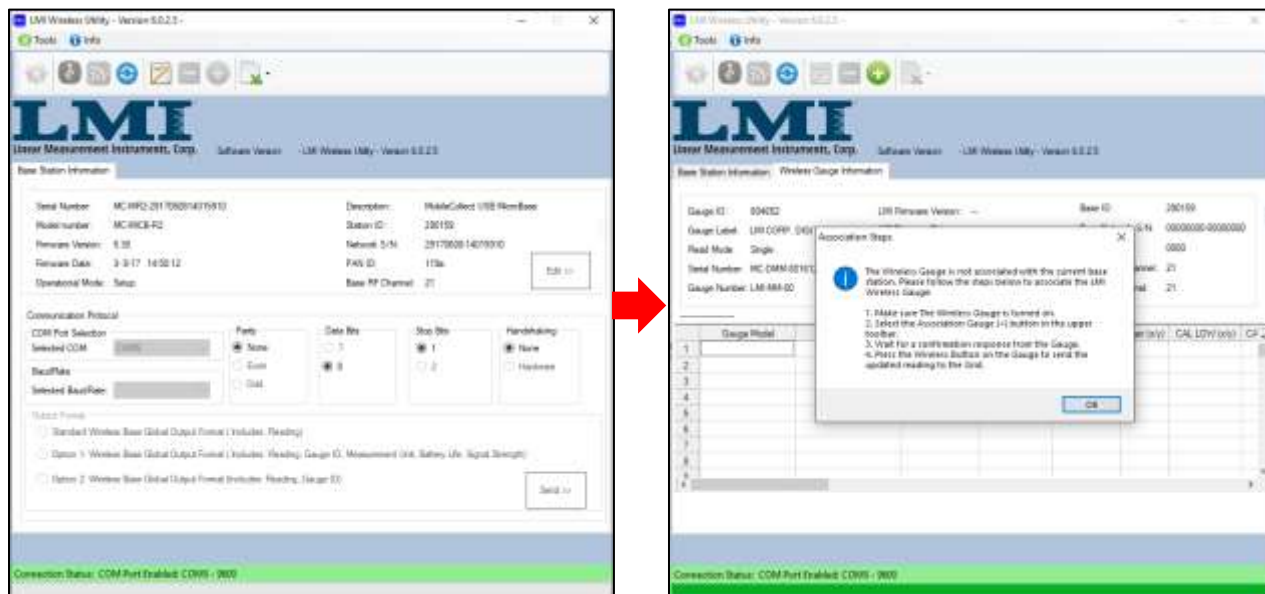
Wireless DiamondBack Quick Start Guide with Wireless Utility



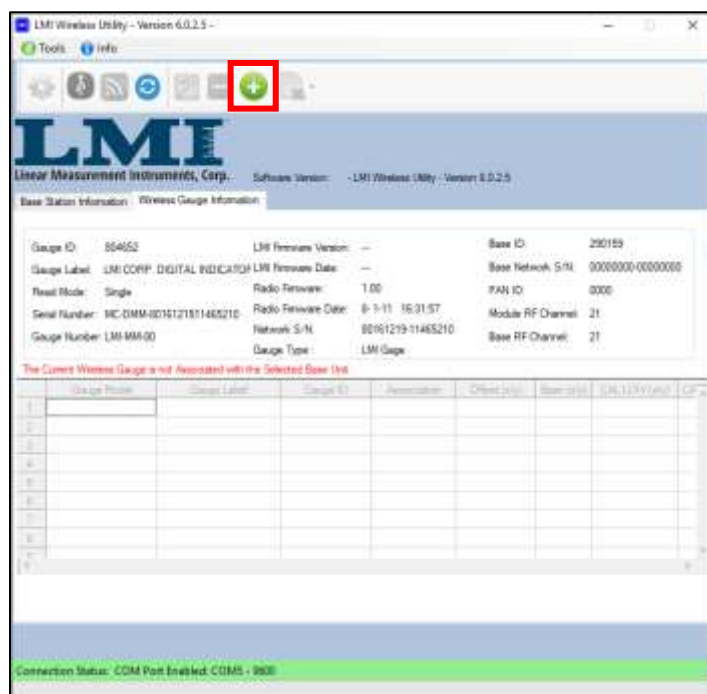
Open Wireless Utility



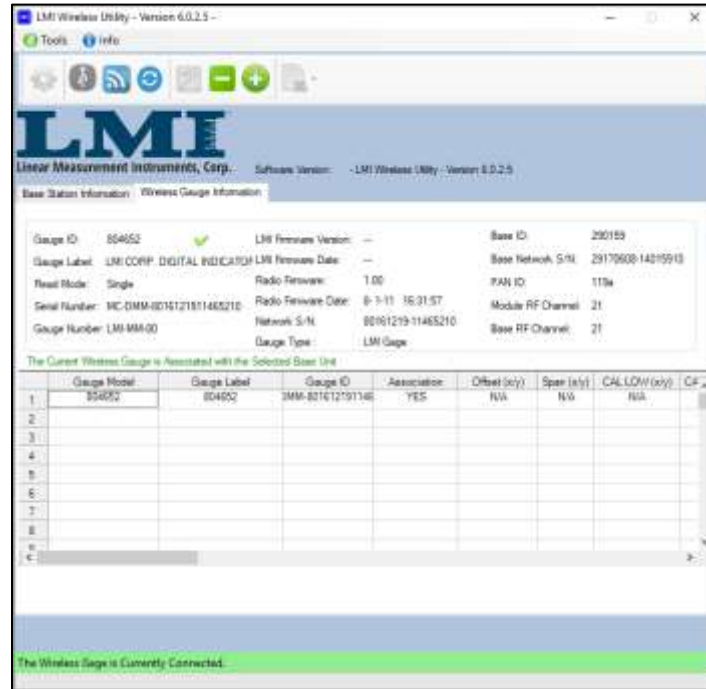
Place the gauge into Setup Mode by pressing and holding the in/mm button for about 4 seconds until SETUP is shown on the screen.



With Wireless Utility open, Press and release the in/mm to send the information over to Wireless Utility. This will cause Wireless Utility to move from the Base Station Information screen to the Gauge Info screen



A message will appear saying that the gauge is not associated. Click okay then press the green plus at the top of the screen to associate the gauge



Another message will appear saying that the gauge is now associated. Click okay and then press and release the in/mm to verify association.