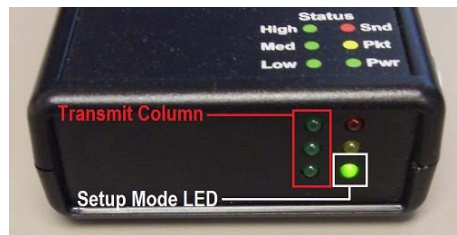


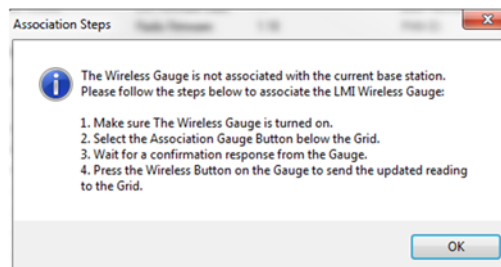
LMI 241W QuickStart Guide

Note: This manual assumes that you have Wireless Utility and the MicroRidge USB drivers installed on your PC.

1. Plug the MicroRidge USB base into an available USB port on the PC.
2. Open Wireless Utility and double-click on the blue “Find Base Unit” button. The green Setup Mode LED on the base will begin to flash:



3. Press and hold the blue transmit button on the 241 until the green light above the button begins to flash.
4. Press and release the blue transmit button on the 241. The green LEDs in the Transmit Column of the MicroRidge USB base will flash once, indicating that the set-up information was sent.
5. If the gauge is associated, proceed to step 8. If the gauge is NOT associated, the following box will appear in the middle of the window:



6. Click on OK to clear the window. To associate the gauge, click on the blue Associate Gauge button. A grid will appear in the middle of the program window, a green bar will appear at the bottom of the screen, and another pop up will appear. Click on OK to clear this message.
7. Press and release the button to send the gauge information to the grid. The green LEDs in the Transmit Column of the MicroRidge USB base will flash once, indicating that the wireless ID was sent.
8. The first line of the grid will populate with the 241 identification information. If not does not, close the program and repeat steps 2 through 5. Double-click the number on the left hand side of the grid to enter calibration and set-up mode.

To calibrate the 241W:

1. With the flush tip and gap carrier fully extended, click on the CAL LO button on the left hand side of the window, then click the SAMPLE button.



2. Fully retract the flush tip and gap carrier, then click on the CAL HI button on the left hand side of the window. Click the SAMPLE button.



3. If the Low and High calibration is good, the software will automatically advance to the CAL Master position. Fully insert the 241W into the master block and click the SAMPLE button.



4. Click the UPDATE button and close out the window to save the calibration to the gauge. The light on the 241W will rapidly flash red, indicating that it is turning off.
5. Close down Wireless Utility.

For a video demonstration of this process, please visit <http://youtu.be/ycCypUTRnPU>.